

# INSTALLATION GUIDE

## AXIS Camera Station

## About this Guide

This guide is intended for administrators and users of the AXIS Camera Station, and is applicable for software release 3.40 and later. It covers the installation of AXIS Camera Station Server and AXIS Camera Station Client as well as instructions for using and managing the AXIS Camera Station on your network. Later versions of this document will be posted to the Axis Website, as required. See also the product's help pages.

## Safety Notices Used In This Manual

**Important!** - Indicates a hazard that can seriously impair operation.

Do not proceed beyond the above notice until you have fully understood the implications.

## Intellectual Property Rights

Axis AB has intellectual property rights relating to technology embodied in the product described in this document. In particular, and without limitation, these intellectual property rights may include one or more of the patents listed at <http://www.axis.com/patent.htm> and one or more additional patents or pending patent applications in the US and other countries.

## Legal Considerations

Camera surveillance can be prohibited by laws that vary from country to country. Check the laws in your local region before using this product for surveillance purposes.

## Liability

Every care has been taken in the preparation of this manual; Please inform your local Axis office of any inaccuracies or omissions. Axis Communications AB cannot be held responsible for any technical or typographical errors and reserves the right to make changes to the product and manuals without prior notice. Axis Communications AB makes no warranty of any kind with regard to the material contained within this document, including, but not limited to, the implied warranties of merchantability and fitness for a particular purpose. Axis Communications AB shall not be liable nor responsible for incidental or consequential damages in connection with the furnishing, performance or use of this material.

## Trademark Acknowledgments

Microsoft, Windows, Internet Explorer and WWW are registered trademarks of the respective holders.

## Axis Customer Services

Should you require any technical assistance, please contact your Axis reseller. If your questions cannot be answered immediately, your reseller will forward your queries through the appropriate channels to ensure a rapid response. If you are connected to the Internet, you can:

- download user documentation and software updates
- find answers to resolved problems in the FAQ database. Search by product, category, or phrases
- report problems to Axis support staff by logging in to your private support area visit the Axis Support Web at [www.axis.com/techsup/](http://www.axis.com/techsup/)

# AXIS Camera Station Installation Guide

## Minimum recommended requirements

For best performance and stability these minimum requirements must be met.

### Client PC:

- Windows 7 Professional, Windows Vista Business, Windows XP Professional  
Always use the latest service packs
- CPU: Intel Pentium 4 or higher, 2 GHz  
(Intel Core i7 recommended for larger systems)
- RAM: 1 GB (4 GB recommended for larger systems)
- Hard drive: 1 GB free memory
- Screen: 1024 x 768
- Graphic card with DirectX 9.0c; Onboard video memory of 256 MB  
Use latest graphic card driver
- Microsoft .NET runtime environment (included in installation package)

### Server PC:

- Windows 7 Professional, Windows Vista Business, Windows XP Professional,  
Windows Server 2008 R2, Windows Server 2008, Windows Server 2003  
Always use the latest service packs
- CPU: Intel Pentium 4, 2 GHz (Intel Xeon recommended for larger systems)
- RAM: 1 GB (4 GB recommended for larger systems)
- Microsoft .NET runtime environment (included in installation package)

### Network:

- 100 Megabit Network  
(Gigabit Network recommended for larger systems)

### Hard disk configuration:

- At 30 fps in VGA with compression 30 up to 15 cameras per hard disk

## Overview

This document will help you install AXIS Camera Station and configure it for your Axis Network Cameras and Axis Video Encoders. A brief introduction to the functionality of the software is covered here, see the help files or the AXIS Camera Station User's Manual for a detailed description. The User's Manual is available on the CD and on [www.axis.com](http://www.axis.com)

AXIS Camera Station is a complete monitoring and recording system for use with Axis Network Cameras and Video Encoders. This installation includes AXIS Camera Station Server and Client.

AXIS Camera Station Server handles the communication with the cameras while AXIS Camera Station Client provides quick and easy access to up to 50 connected and configured cameras, recordings, inputs and outputs used in the system.

Multiple Clients can be connected to the same Server. A Client can be connected to multiple Servers.

## Configuration

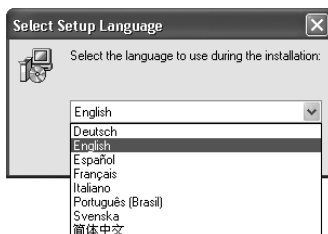
Quick links to all dialogs that allow control and configuration of all aspects of the AXIS Camera Station Client are found in the workspace **Configuration**. They can also be found under menu items Configuration and Options.

## Install AXIS Camera Station Software

Install AXIS Camera Station Server on a dedicated computer.

**Note:** Visit [www.axis.com](http://www.axis.com) to check if a new software release is available. Always use the latest version to ensure that your installation has the latest functionality and improvements.

1. Insert the CD in the CD drive. If the installation CD does not auto-start, click `autorun.exe` in the CD's root folder.
2. From the CD's interface, click **Software** and then **AXIS Camera Station**
3. Select the preferred language to install.



**Note:** You may be prompted to:

- install .NET Framework. Simply follow the Installation Wizard's instructions
  - update the computer's graphics card driver. For information on how to do this, see the AXIS Camera Station User's Manual or help files
4. Next, you will be asked where you wish to install the program. If nothing is specified the program is installed in **C:\Program Files\Axis Communications\AXIS Camera Station 3**
  5. Select components to install. Full installation includes AXIS Camera Station Client and Server. If you have already installed AXIS Camera Station Server on another computer you may choose to install only AXIS Camera Station Client.

**Firewall** – AXIS Camera Station Server accepts incoming network requests from AXIS Camera Station Clients that can be located outside of your local network. If your computer has a firewall installed it must be configured to allow incoming network requests. See the chapter *Network & Security Configuration* in AXIS Camera Station User's Manual.

6. Click your way through the Installation Wizard.

## Network Configuration

AXIS Camera Station can record and play back video from cameras that are connected to a LAN (Local Area Network) or to a WAN (Wide Area Network). Depending on your installation, follow the instructions under *Network & Security Configuration* in *AXIS Camera Station User's Manual*.

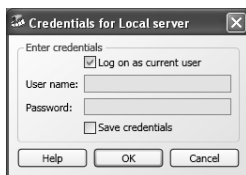
## Connect AXIS Camera Station Client

To connect AXIS Camera Station Client to a Server, from the Start menu, click **AXIS Camera Station 3 > AXIS Camera Station Client** or click on the AXIS Camera Station Client icon on your desktop.

### Installed on the same computer

To log onto the AXIS Camera Station Server installed on the same computer as your AXIS Camera Station Client:

1. Check **Local server**.
2. Click **Connect**. The **Credentials** dialog opens.
3. Check **Log on as current user** or enter your **User name** and **Password**.
4. Click **OK**.



### Installed on another computer

To log onto an AXIS Camera Station Server that is installed on another computer than your AXIS Camera Station Client.

1. Check **Remote server** and enter the address or hostname of the AXIS Camera Station Server you want to connect to.
2. Click **Connect**. The **Credentials** dialog opens.



3. Check **Log on as current user** or enter your **User name** and **Password**.
4. Click **OK**.

**Note:** If the server is configured to accept clients on a different port than the default port 55752, enter the address followed by the port number. For example, 192.168.0.5:46001

For more information click **Help** or see **AXIS Camera Station User's manual**.

### Configure Client Proxy Settings

If **AXIS Camera Station Client** and **AXIS Camera Station Server** are separated by a proxy server, the client proxy settings need to be configured:

1. Open **AXIS Camera Station Client**. Click **Cancel** in the **Connect to** dialog to open the client without connecting to a server
2. Select **File > Client Proxy Settings** and enter the proxy settings. Click **Help** for more information.

### AXIS Camera Station Activation

The first time you start **AXIS Camera Station** you will be asked to register your license. The **License Key** can be used for only one current installation. Once registered it cannot be used again. The **License Key** is your proof of purchase, keep it in a safe place for future reference.

### Licenses

A base license is required to run **AXIS Camera Station** and allows for 4 or 10 video channels to be used with the program. Upgrade licenses for additional video channels can be installed under **Options > Licenses**, see **AXIS Camera Station User's Manual** for more information.

There are three licenses available for purchase at your local Axis reseller:

- Base license - For 4 or 10 video channels. Includes one year free support and software upgrades.
- Upgrade license - For additional video channels.
- Support license - One year support and software upgrades.

Licenses and the time period remaining are displayed under **Options > Licenses**. **MyAxis** ([www.axis.com/reg/](http://www.axis.com/reg/)) also shows your registered licenses and activation dates.

## Internet connection:

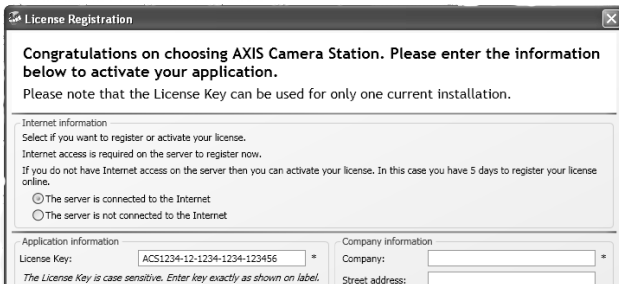
### Register automatically

If AXIS Camera Station is installed on a computer with Internet access you can register automatically. Your license information is sent directly to the Axis Web server.

1. Select **Licensed Version** and click on the **OK** button.



2. Select the option **The server is connected to the Internet** and fill in the requested information. The License Key is found on the inside of the AXIS Camera Station CD casing. Click **Register**.



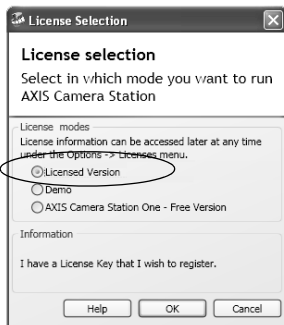
3. Your license information will be sent to Axis Communications and your software will be activated automatically.
4. You can now start using AXIS Camera Station.



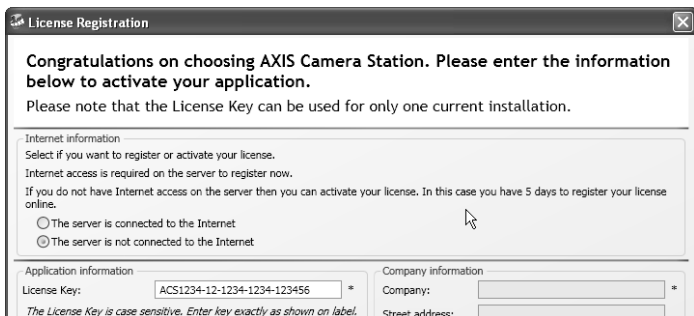
## No Internet connection: Register manually

If AXIS Camera Station is installed on a computer without (or with low-speed) access to the Internet, you can acquire the Access code that is needed to activate the software from the Axis Web site and enter it manually.

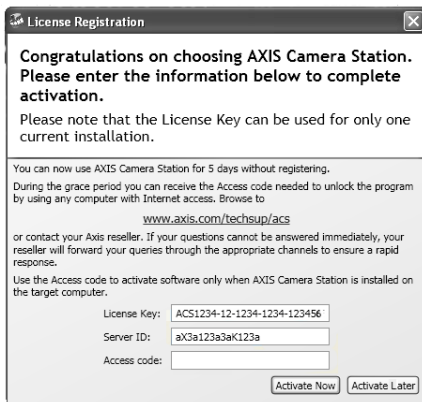
1. Select **Licensed Version** and click on the **OK** button



2. Select the option **The server is not connected to the Internet** and enter the License Key.
3. Click **Activate**.



4. A dialog opens with the **Server ID**, make a note of it. You will need the Server ID when filling in information on the Internet form to receive an Access code.

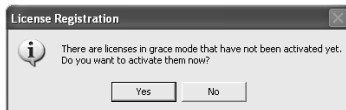


5. Click **Activate Later**. You can now use AXIS Camera Station in grace mode for 5 days.

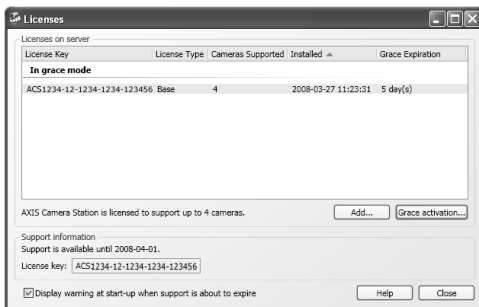
## Activate licenses in Grace mode

During the grace period you can receive the Access code by using any computer with Internet access. Browse to <http://www.axis.com/techsup/acs>, fill in the requested information and click **Submit**. You will be given an access code.

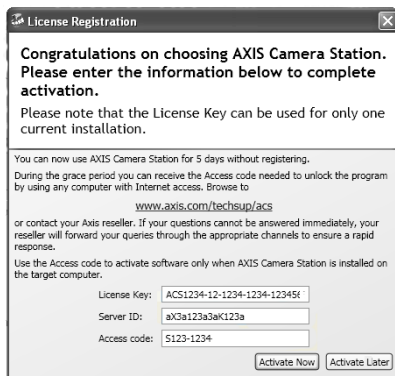
1. When you have received the access code, select **Yes** to the License Registration prompt when starting up AXIS Camera Station.



- Click the **Grace activation** button in the Licenses dialog.



- Enter your Access code. License Key and Server ID are filled in automatically.



- Click **Activate Now**.

## Register License from 30-day Demo or AXIS Camera Station One

If you are currently running the Demo version or AXIS Camera Station One and wish to switch to the full version of AXIS Camera Station, you can register your license by selecting **Options > Licenses** from the main menu.

Follow the instructions for "*Internet connection: Register automatically*" described on page 8 or "*No Internet connection: Register manually*" described on page 9.

## Configure AXIS Camera Station

For easy navigation AXIS Camera Station is divided into workspaces; **Live view**, **Recordings**, **Camera Management**, **Logs** and **Configuration**.

- **Live view** - Provides a single interface to organize and monitor Axis network cameras and video encoders on your network
- **Recordings** - Search, playback and export recordings from one or many cameras in a desired time interval with timeline visualization
- **Camera Management** - Manage firmware upgrades, configure IP addresses, passwords and date & time settings of one or multiple devices
- **Logs** - Alarm, event and audit logs for an instant overview of the system
- **Configuration** - has a collection of all the important links to add cameras, set up recording settings, user permissions, event configuration and more

When AXIS Camera Station is started for the first time it automatically adds Axis cameras and video encoders it finds on your network. If there are more cameras on your network than you have a license for, the **Add/Edit Camera** dialog will open automatically.

For more information see the AXIS Camera Station Help or the User's Manual.

## AXIS Camera Station User Interface

