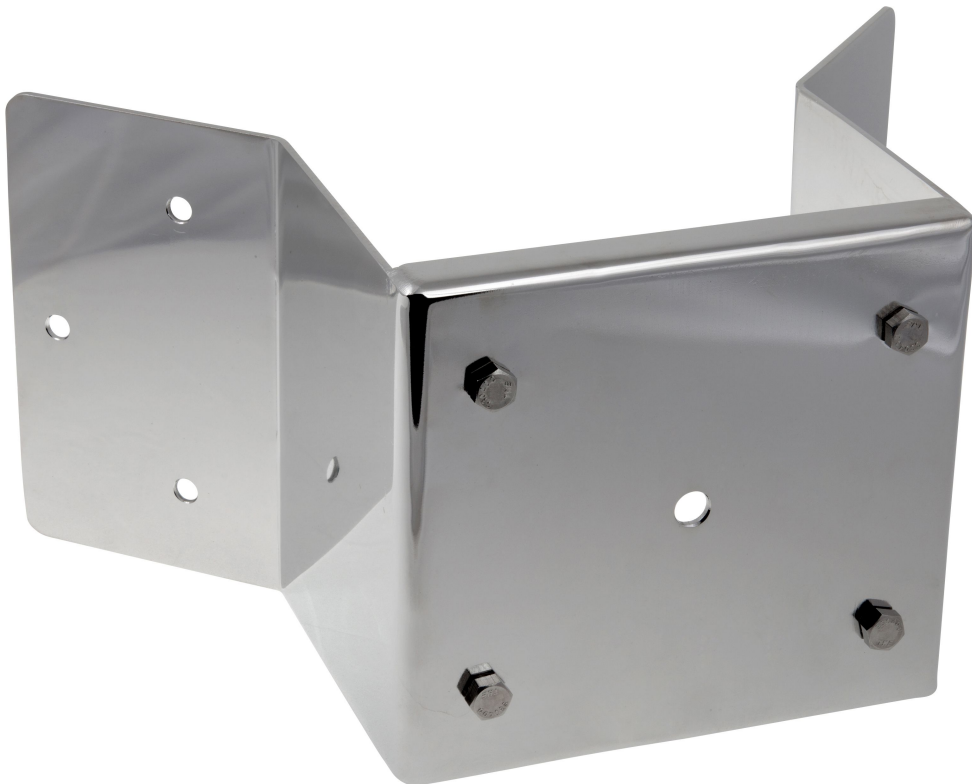


Corner Mount D201-S XPT

For explosion-protected PTZ network cameras

The electropolished 316L stainless steel corner mount is designed for D201-S XPT Q6055 Explosion-Protected PTZ Network Camera. Together with the required Wall Mount D201-S XPT, it allows D201-S XPT Q6055 to be mounted on corners. It is ideal for onshore, offshore, marine and heavy industrial applications.

- > [Electropolished stainless steel finish \(SS 316L\)](#)
- > [Resistant to corrosion](#)
- > [Sturdy and safe](#)
- > [Compatible with D201-S XPT Q6055](#)



Corner Mount D201-S XPT

General	
Supported products	D201-S XPT Q6055 Explosion-Protected PTZ Network Camera
Material	SS 316L
Maximum load	2200 lb (1000 kg)
Dimensions	16.33 x 8.27 x 9.92 in (415 x 210 x 252 mm)
Weight	10.6 lb (4.8 kg)

Required accessories	Wall Mount D201-S XPT
Optional accessories	For more accessories, see axis.com
Warranty	Axis 3-year warranty, see axis.com/warranty

Environmental responsibility:
www.axis.com/environmental-responsibility